

- A** Hydraulic rigid seamless steel pipe, DIN 2391, max working pressure 200 bar, wall thickness 2 mm.
- B** Straight compression type fitting, DIN 2353.
- C** Elbow compression type fitting, DIN 2353.
- D** T – compression type fitting, DIN 2353.
- E** Intermediate compression type fitting, DIN 2353.
- F** Fixation clamp.
- G** Non-return valve.
- H** Shut-off valve, M-F.
- I** Pressure relief valve.

Type	Ø 18	Ø 25	Ø 28	Ø 35	1/2"	3/4"	1"
A	Art. no. 9818	Art. no. 9825	Art. no. 9828	Art. no. 9838	-	-	-
B	Art. no. 9839	Art. no. 9847	Art. no. 9851	Art. no. 9855	-	-	-
C	Art. no. 9840	Art. no. 9846	Art. no. 9850	Art. no. 9854	-	-	-
D	Art. no. 9858	Art. no. 9848	Art. no. 9852	Art. no. 9856	-	-	-
E	Art. no. 9859	Art. no. 9845	Art. no. 9849	Art. no. 9853	-	-	-
F	Art. no. 9841	Art. no. 9844	Art. no. 9842	Art. no. 9857	-	-	-
G	-	-	-	-	Art. no. 6641	Art. no. 6643	Art. no. 6640
H	-	-	-	-	Art. no. 7241	Art. no. 7240	Art. no. 7239
I	-	-	-	-	Art. no. 2259	Art. no. 2260	Art. no. 2258

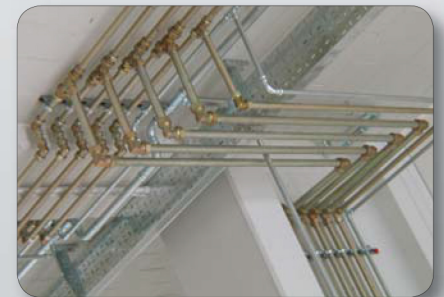


Art. no. **9843**

Metal bar 28x30 mm, suitable for the mounting of fixation clamps (F).

Art. no. **9872**

Metal L – bracket, suitable for the fixation overhang of rigid pipes.



Art. no. **9817**

Adhesives for the indication of the different liquids, to be applied on the pipes. Dimensions: 150x30 mm. The standard versions available are:

- OIL 1
- OIL 2
- OIL 3
- WASTE OIL
- ANTIFREEZE
- WASTE ANTIFREEZE
- AIR
- WATER

Adhesives with different or customized descriptions are available as of a minimum order of 50 pieces.